



Saint Paul
PORT AUTHORITY

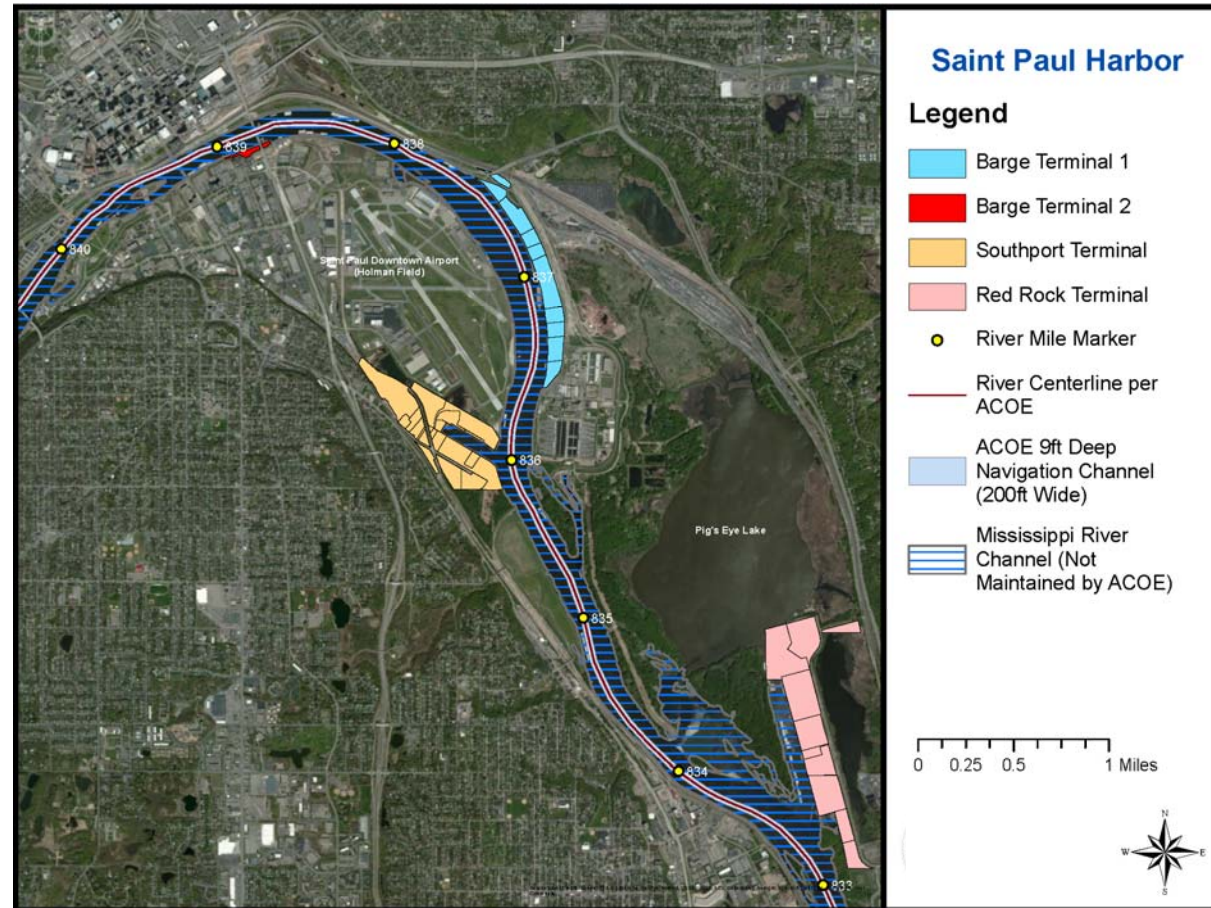
Our Mission

The Saint Paul Port Authority creates quality job opportunities, expands the tax base and advances sustainable development.



4
River Terminals

\$2MM
Annual Tax Revenue

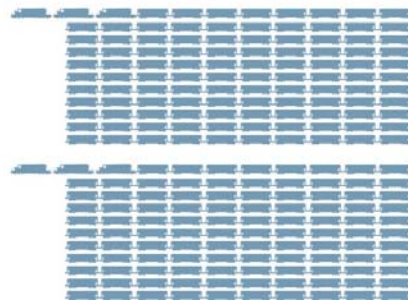


Barge Conversion

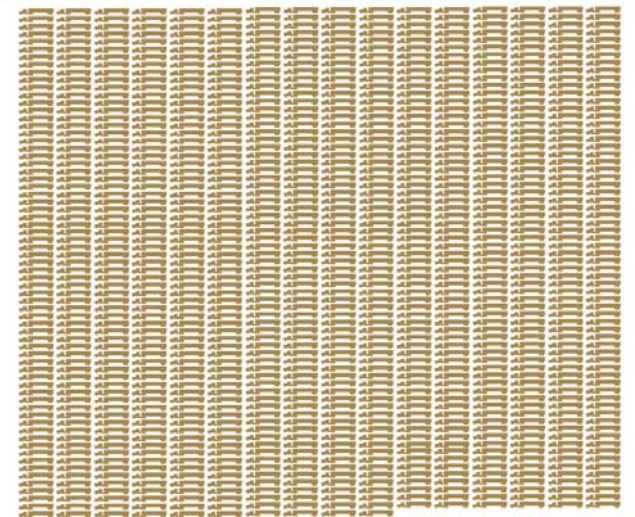
One 15-Barge Tow



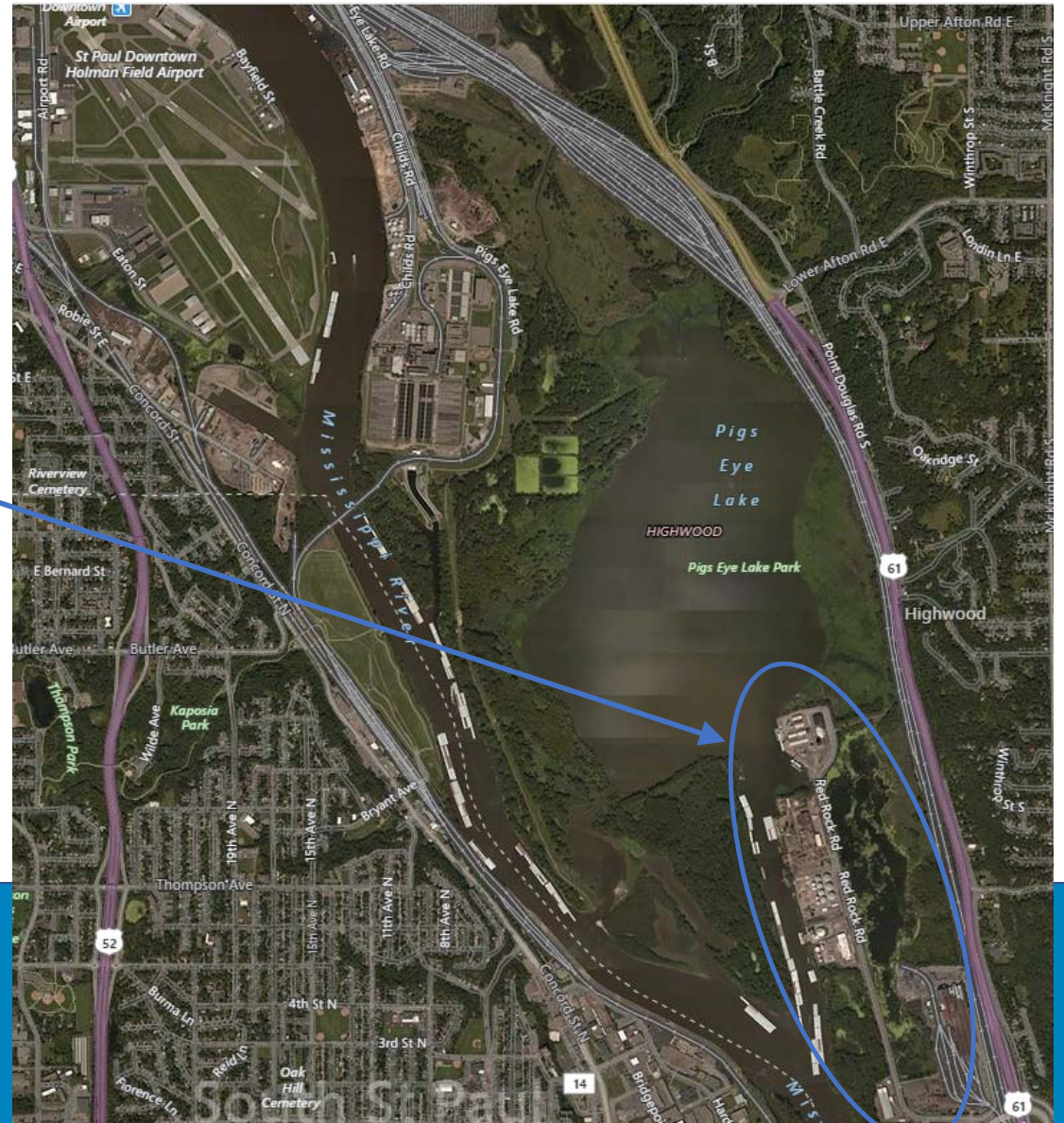
216 Rail Cars + 6 Locomotives



1,050 Large Semi Tractor-Trailers

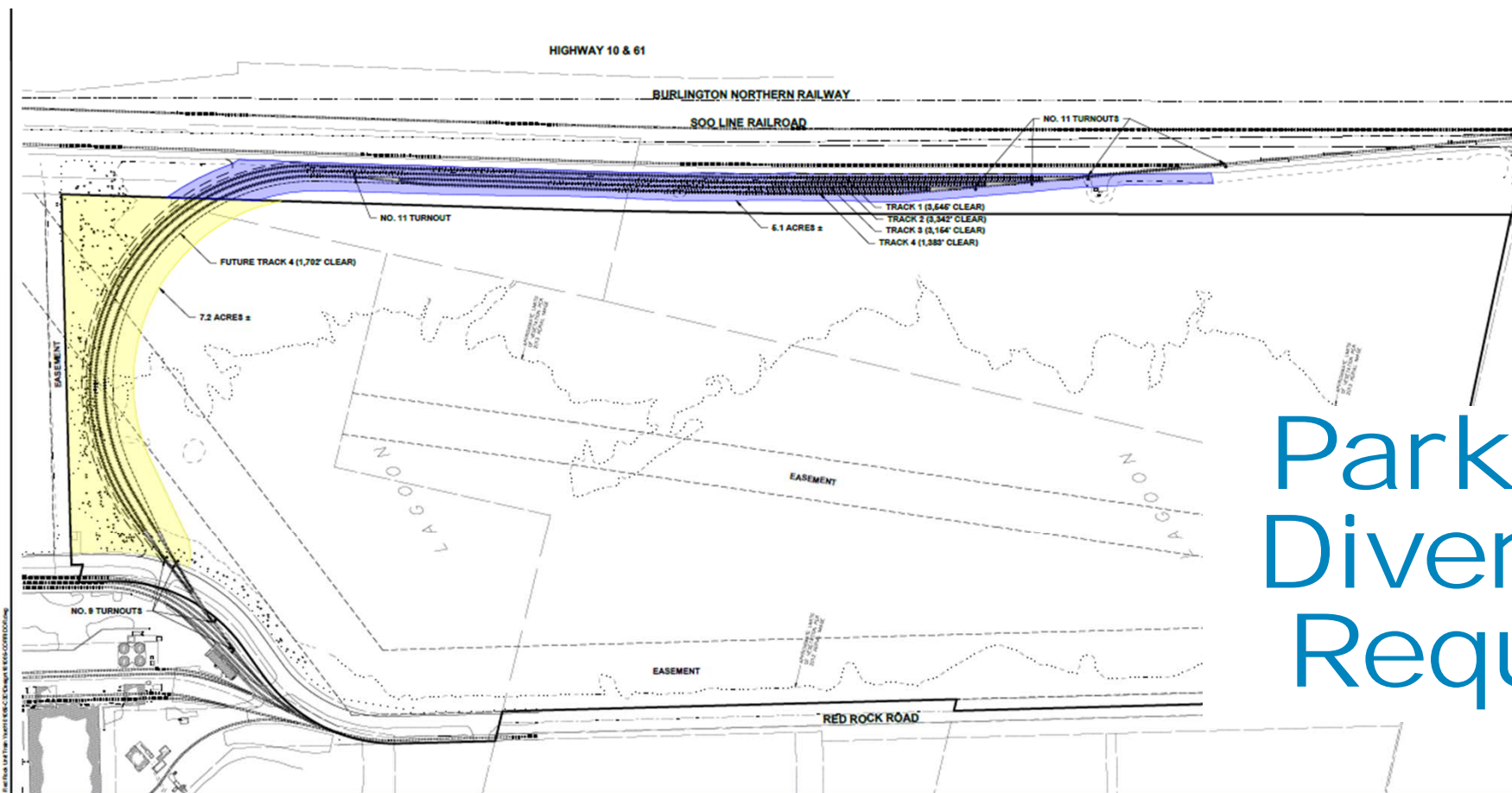


Red Rock Shipping Terminal



Objectives

- **SAFETY**
- **Be an economic driver for the city and region**
 - Living wage (union) jobs
 - Tax base (funding) for Saint Paul
 - Transportation hub to allow for supply chain movement of goods
- **Increase public river access**
- **No environmental degradation**
- **Improve operational efficiency**



Parkland Diversion Request

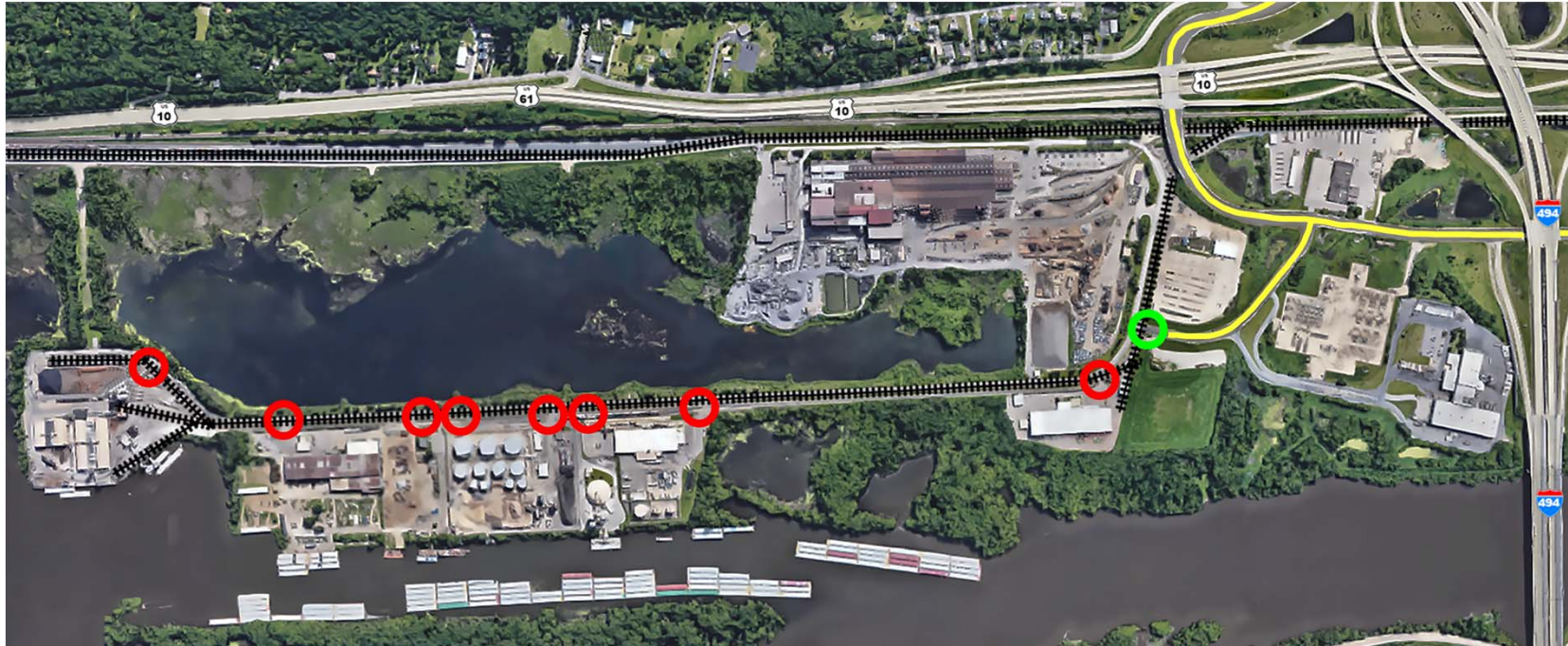


Saint Paul
PORT AUTHORITY

What about Wetlands?

- In 1991 Minnesota passed the Minnesota Wetland Conservation Act (WCA)
- Purpose of WCA is to achieve no net loss in quantity, quality, and biological diversity of MN wetlands
- If property ownership transfer is successful, next steps include:
 - Wetland Survey/inventory
 - Work with DNR and environmental consultants to develop a wetland mitigation plan that meets demands of WCA

Why? Current Issue



Safety Concerns

- Home to 600 daily workers
- Up to 750 trucks passing through daily
- In 2017, over 2.7 million tons shipped through Red Rock Terminal

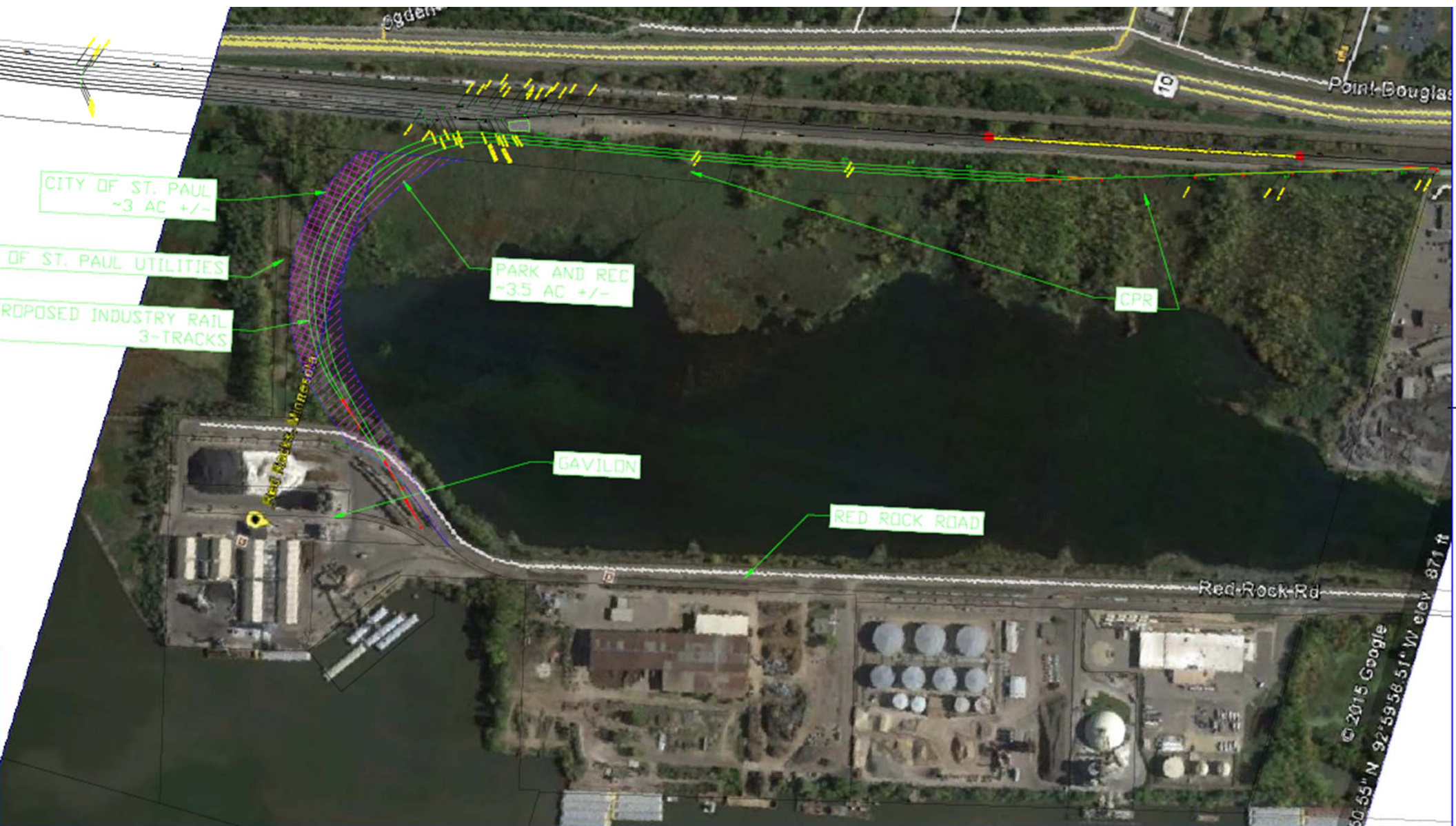




Saint Paul
PORT AUTHORITY

North Rail Access





CITY OF ST. PAUL
~3 AC +/-

CITY OF ST. PAUL UTILITIES

PROPOSED INDUSTRY RAIL
3-TRACKS

PARK AND REC
~35 AC +/-

CPR

GAVILDN

RED ROCK ROAD

Red Rock Rd

© 2015 Google
50.55° N 92.59 58.51° W elev 871 ft

Alternative Advantages

- **Unit Train access from the north means:**
 - No more extended blockages of terminal or business entrances
 - Workers getting to/from work as needed
- **Improves Accessing to Pigs Eye Lake and River**
 - SPPA make a donation to schematic design phase of Great River Passage implementation for east side of Saint Paul
 - Partnership between SPPA, City staff, residents and businesses to find safe access points
- **Provides a no cost to the City solution funded by businesses and the Port Authority**

Next Steps

- **Get feedback from District Council**
- **Work to address community concerns**
- **Parkland diversion request goes before parks commission**
- **Parkland diversion request goes before City Council for approval**
- **If approved, SPPA and Gavilon will work on design and future construction of project including mandatory wetland impact mitigation and/or replacement as needed**
- **SPPA make a donation to schematic design phase of Great River Passage implementation for east side of Saint Paul**

Questions?



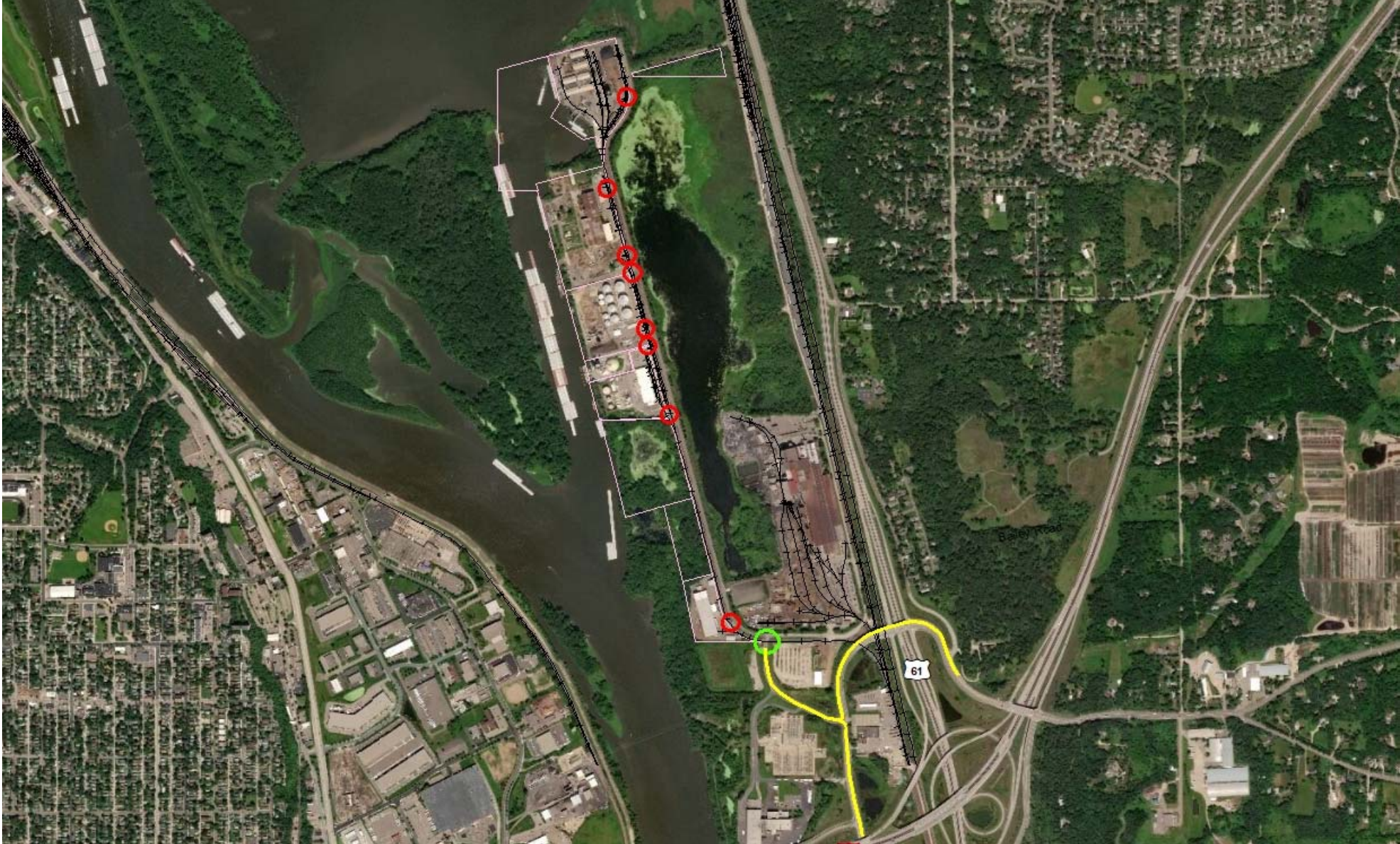
Saint Paul

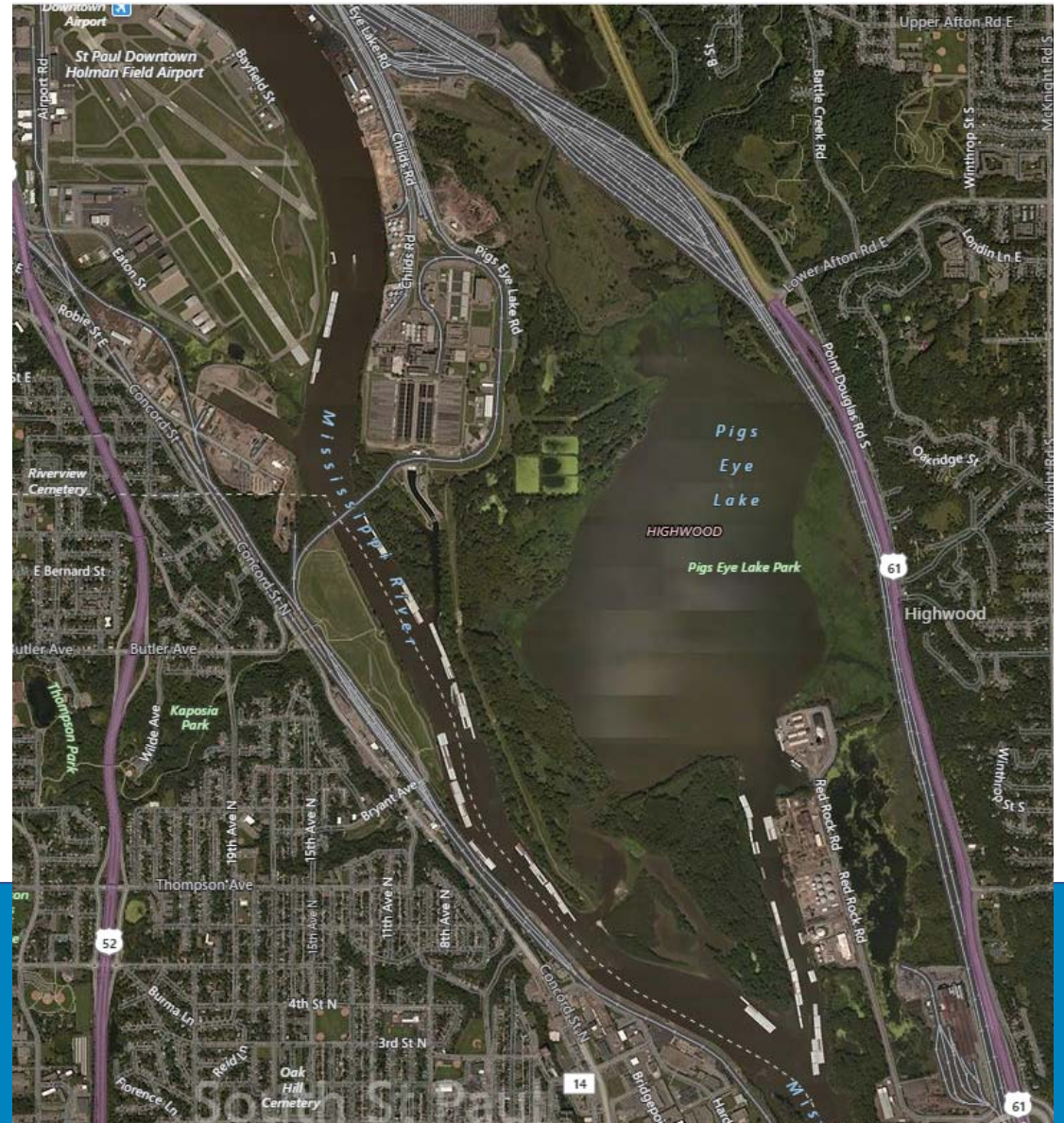
PORT AUTHORITY

Kathryn Sarnecki

VP, Redevelopment and Harbor Management
651-204-6221 | kls@sppa.com

380 Saint Peter Street #850 | Saint Paul, MN 55102





Saint Paul
PORT AUTHORITY